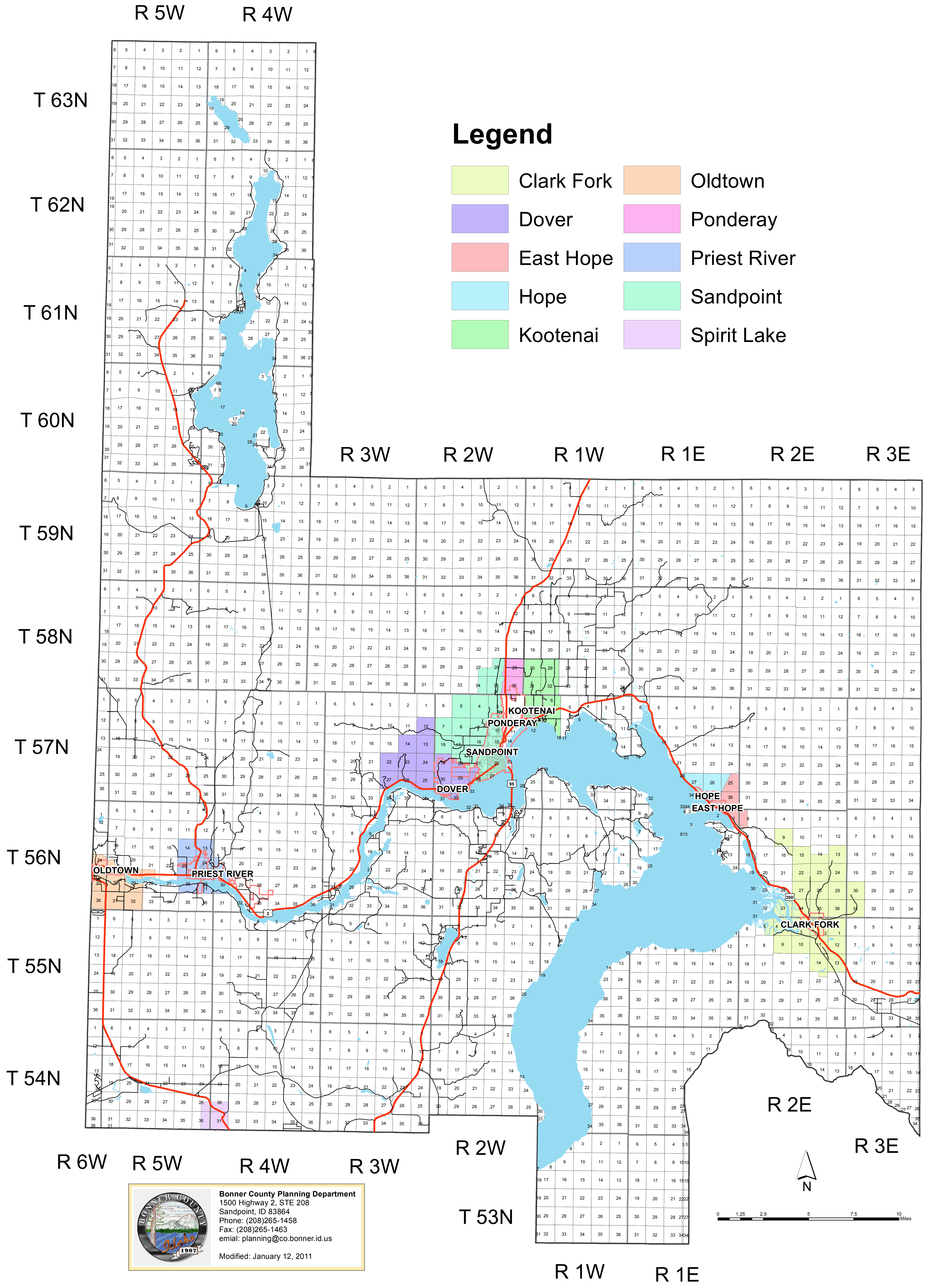


Areas of City Impact Boundaries in Bonner County



Legend

- | | |
|--|---|
| Clark Fork | Oldtown |
| Dover | Ponderay |
| East Hope | Priest River |
| Hope | Sandpoint |
| Kootenai | Spirit Lake |

Bonner County Planning Department
 1500 Highway 2, STE 208
 Sandpoint, ID 83864
 Phone: (208)265-1458
 Fax: (208)265-1463
 Email: planning@co.bonner.id.us
 Modified: January 12, 2011

